

# A PLAT OF BOCA LANDINGS NORTH

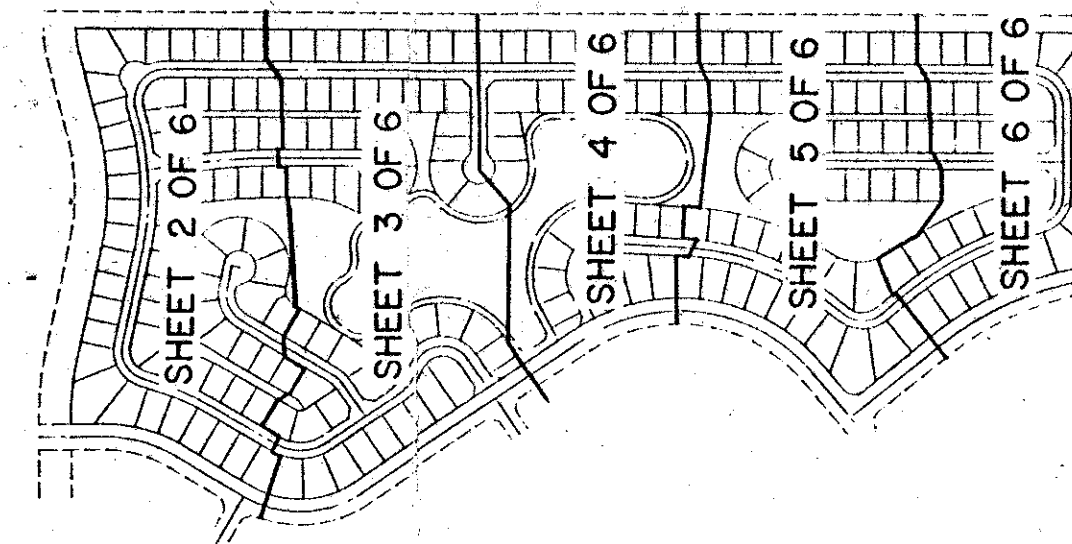
SHEET 2 OF 6

(A PART OF MOON LAKE P.U.D.)

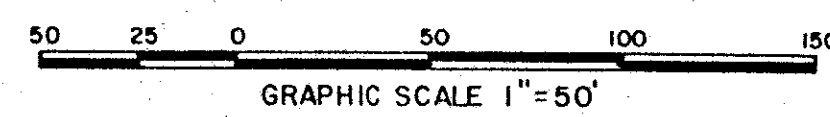
JUNE, 1989

0349-007

# 112



KEY MAP



STATE OF FLORIDA  
COUNTY OF PALM BEACH  
This Plat was filed for record at \_\_\_\_\_  
M. this \_\_\_\_\_ day of \_\_\_\_\_ 19\_\_\_\_  
and duly recorded in Plat Book No. \_\_\_\_\_  
on Page \_\_\_\_\_  
John B. Dunkle, Clerk of the Circuit Court  
By \_\_\_\_\_ D.C.

**WEITZER SUBDIVISION P.U.D.  
PLAT NO. 2**  
(P.B. 80, PGS. 180 - 183)

ABANDONED O.R.B. 4660, PGS. 135-138  
30' ROAD BY PLAT

*Boca Landings North*  
SUBDIVISION # 63  
BOOK 63  
PAGE 112  
FLOOD MAP # 215A  
QUAD # 53  
ZONING RS 80-206  
# 742 749  
ZIP CODE 33434  
PUD NAME  
*Part of Moon Lake PUD*

**LAKERIDGE BOULEVARD**  
(P.B. 80, PGS. 180 - 181)

**L.W.D.D. CANAL E - 1**  
(O.R.B. 4213, PG. 856)

**LAKE SERENA DRIVE**

**TRACT "R-1"**

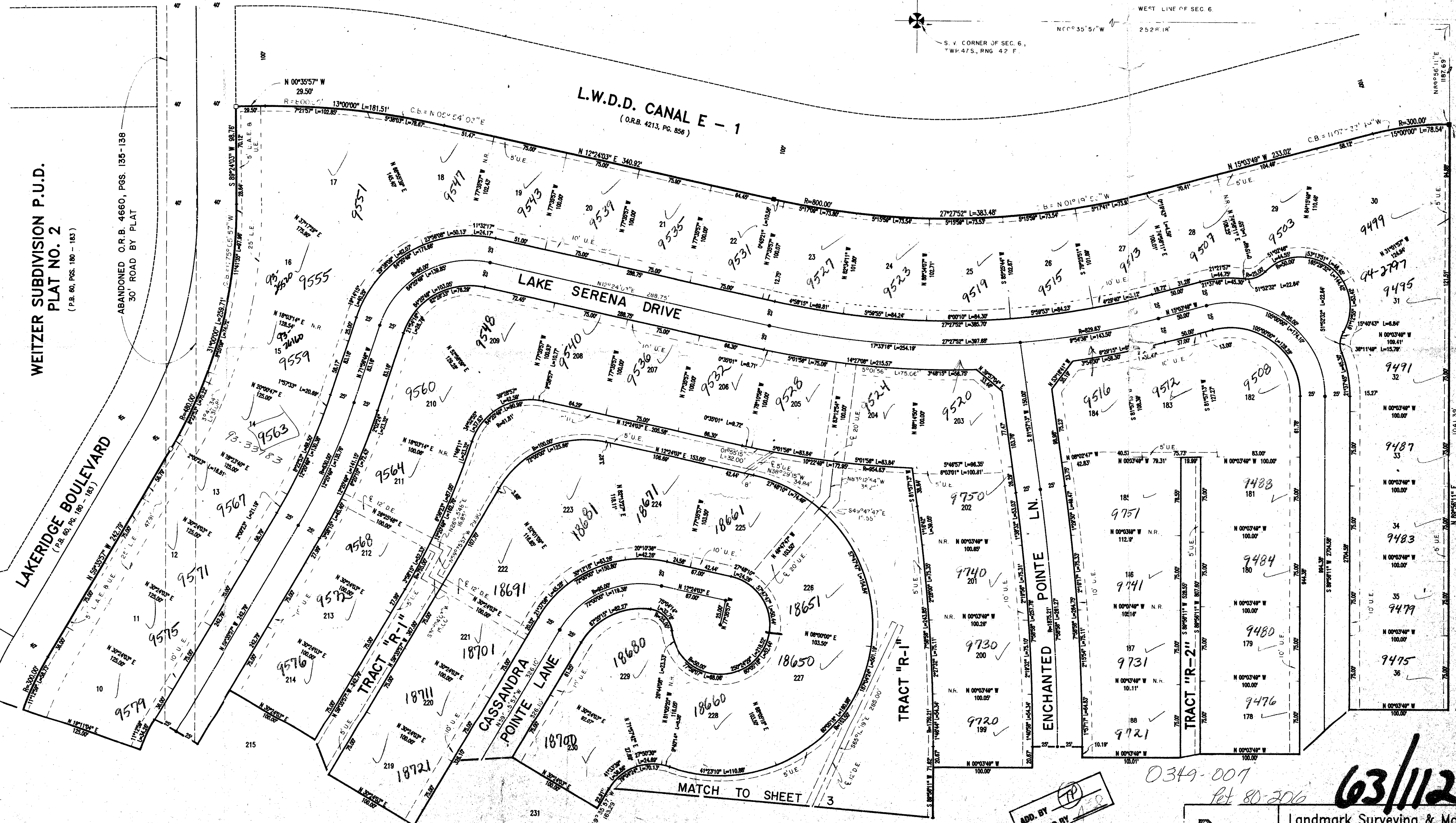
**CASSANDRA  
POINTE LANE**

**ENCHANTED  
POINTE LN.**

**TRACT "R-2"**

**L.W.D.D. CANAL LATERAL NO. 41**  
(O.R.B. 3740, PG. 0328)

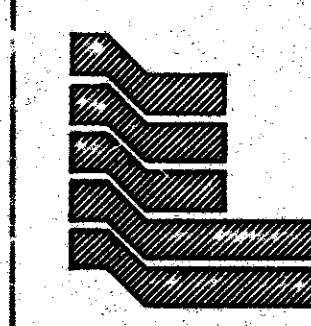
**SPANISH ISLE BOULEVARD**  
PLAT # 112  
(P.B. 57, PGS. 20 - 23)



ADD. BY *TP*  
CHECKED BY *AE*

0349-007  
Pt 80-206

# 63/112



**Landmark Surveying & Mapping Inc.**  
1850 FOREST HILL BOULEVARD  
PH. (407)433-5405 SUITE 100 W.P.B. FLORIDA

**BOCA LANDINGS NORTH**